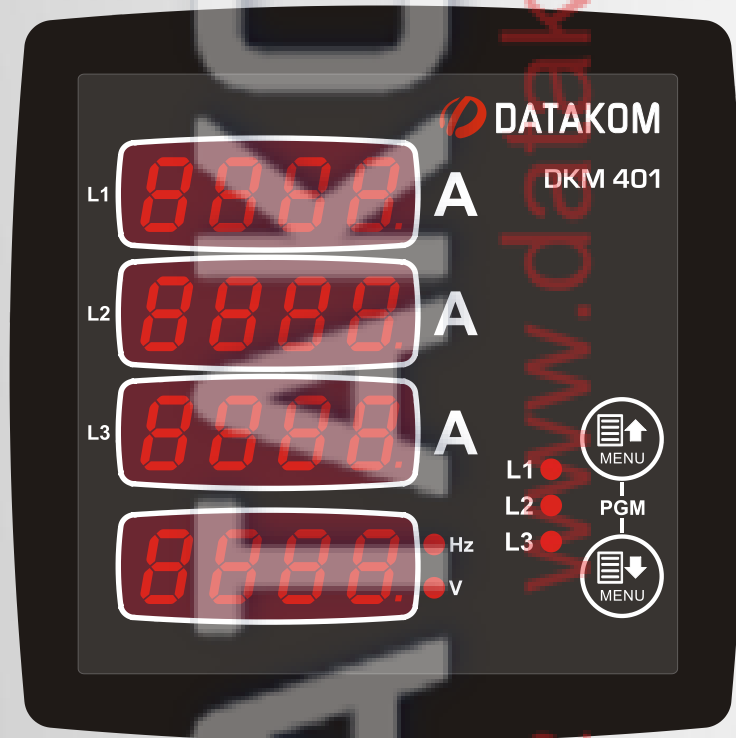


DKM-401

96x96mm



DKM-401

true RMS

3-

0,5

230/400

(IP54)

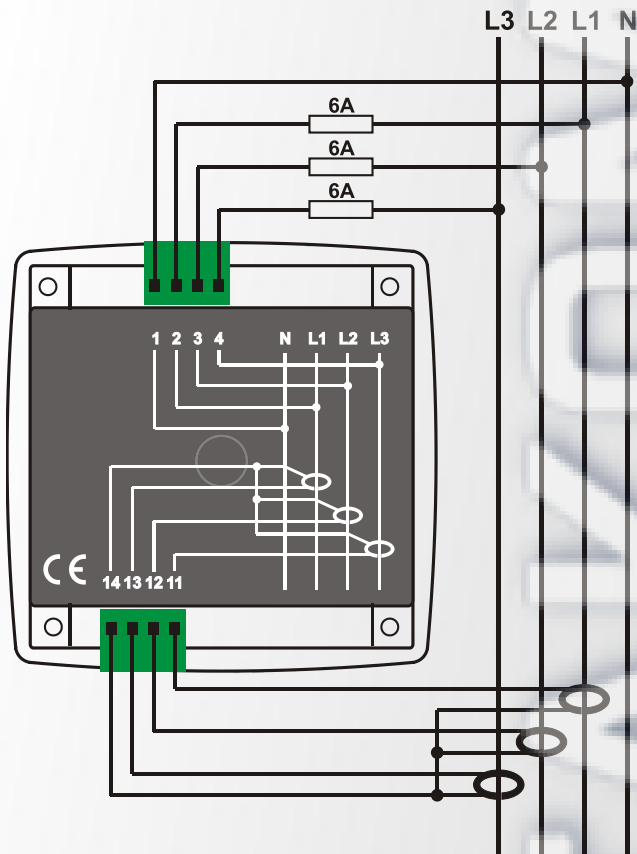
92 92

(-):U12-U23-U31

(-)V1-V2-V3

: I1-I2-I3

: F



170 - 275VAC,
50 - 60Hz (± 10%)

: 10 - 300 V AC (L-N)
20 - 520 V AC (L-L)
0.2 - 5.5 A AC
30 - 100 Hz

: 0.5%+1 digit
0.5%+1 digit
0.5%+1 digit

: 5/5A to 5000/5A

: < 4 W

: < 0.1VA

< 1VA

-20°C to +80°C (-4 to +176 °F).

: 95%

: IP 54 ()

IP 30 ()

102x102x53mm (WxHxD)

: 92x92mm

200 gr

EU Directives:

2006/95/EC (LVD)

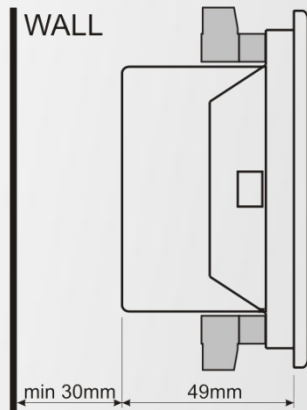
2004/108/EC (EMC)

Norms of

reference:

EN 61010 (safety)

EN 61326 (EMC)



12 pieces

280 x 170 x 215mm

2.6 kg

